



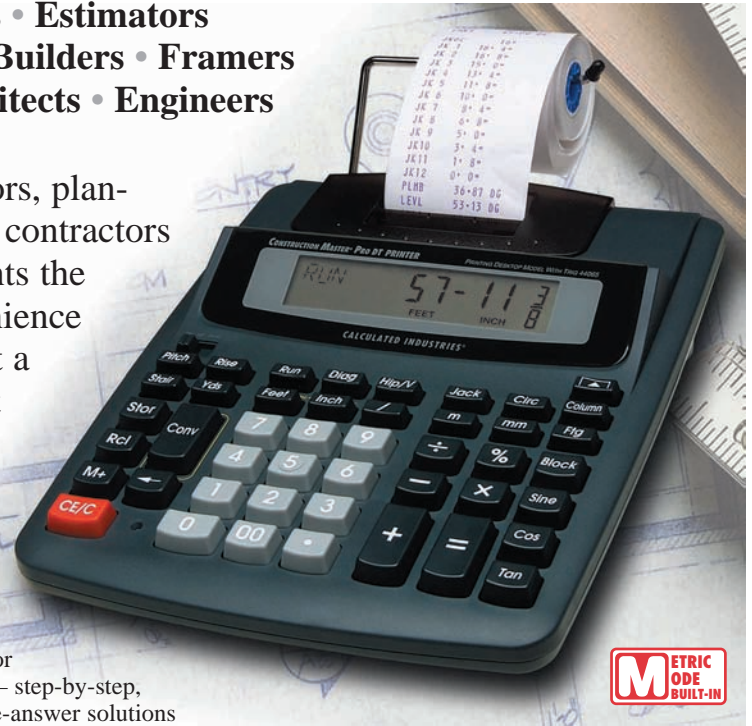
CONSTRUCTION MASTER® PRO DT PRINTER

PRINTING DESKTOP MODEL

Advanced Construction Math Calculator

**Contractors • Estimators
Plan-Checkers • Builders • Framers
Detailers • Architects • Engineers**

Perfect for estimators, plan-checkers, detailers, contractors or anyone who wants the time-saving convenience and confidence that a hard-copy print-out provides.



- **Cut Costs, Errors and Rework**
- **Get Accurate Estimates and Award Winning Bids**
- **Automatically Print Each Calculation Step**

- **Exclusive! Built-in Paper Tape Printer**
Lets you record your calculations, double check your entries and answers, or review your calculations — step-by-step, on paper! Print all multiple-answer solutions (like Stairs and Rafters) with the single press of a button. User selected modes for Print/Non-Print/Print-List settings. Operates on either AC or batteries.
- **Works in and Converts Between All Dimensional Formats**
Work in the units of your choice; Feet, Inches, Fractions, Yards and Metric — including Square and Cubic formats.
- **Rafters and Right Angles**
Custom Rafter keys give you Common Rafters, Regular (45°) and Irregular (non-45°) Hips, Valleys and Jacks.
- **Improved Rake-Wall Key**
Determines each stud length for any on-center spacing in ascending or descending order.
- **Enhanced Stair Solutions**
Everything you need to layout your next stairway with confidence: Risers, Treads, Stringer Length, Incline Angle and more.
- **Advanced Circular Solutions**
Complete built-in solutions for arches, columns, cones, windows, pillars, post-holes and more.
- **Jack Rafter Functions**
Complete solutions in ascending or descending order for regular and irregular-pitch roofs.
- **Trigonometric Functions**
Sine, Cosine, Tangent, Arcsine, Arccosine and Arctangent simplify complex design and construction math.
- **Automatic Block and Footing keys**
- **Pitched Roof Area key**
- **D:M:S to Decimal Degree Conversions**

- **Backspace Key**
Easily change just-entered values without re-entering everything.
- **Three Built-in Memories**
Store constants or accumulate values in any format.
- **Exponential Notation**
Enter and display exponential values.
- **User-Set Preferences**
Allows permanent setting of many user-defined options including printing options.
- **Custom-Set Fractions**
Set to 1/2, 1/4, 1/8, 1/16, 1/32, 1/64.
- **Board Feet Lumber Estimating**
Easily estimate material amounts.
- **Fast Per-Unit Cost Solutions**
For easy unit costing and pricing.
- **Weight Per Volume Conversions**
- **Jumbo Display**
Large, clear digits on an easy-to-read LCD display.
- **More Features**
Also works as a standard math calculator with Auto Shut-Off, +/-, %, π , x^2 and Square Root, plus Constant Operator. Includes a large, example filled User's Guide, AC Power Supply, (will operate on 4 double "AA" batteries — not included) and a Full One-Year Warranty.

HURON *Reprographics*

271 Devine Street Sarnia, Ontario N7T 1T4
www.huronblue.com info@huronblue.com
519-344-7879 fax 519-344-3431

One Source Means Increased Productivity for You!

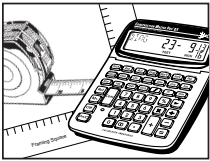


CONSTRUCTION MASTER® PRO DT PRINTER Printing Desktop Model

The premier Feet, Inch, Fraction and Dimensional calculator for design, building and construction pros.

Model 44065

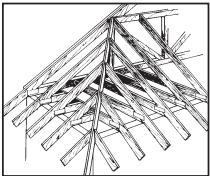
Construction math problems are simple to solve!



Dimensional math.

Simply press the number and then "label" it as "Feet," "Inches," or whatever format you are using...

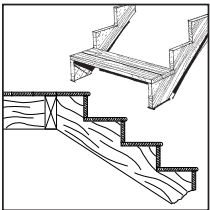
STEP	KEYSTROKE	TAPE/DISPLAY SHOWS
Reset calculator	[Conv] [x]	0.
1st value	6 [Feet] 3 [Inch] 5 [/] 8	6 FEET 3-5/8 INCH
2nd value	[+] 252 [Inch]	252 INCH
3rd value	[+] 23 [MM]	23 MM
Total length	[=]	27 FEET 4-1/2 INCH



Finding common rafter length with pitch unknown.

Find the Common rafter length for a roof with a rise of 6 feet 11-1/2 inches and a run of 14 feet 6 inches. Solve for the pitch in inches and degrees...

STEP	KEYSTROKE	TAPE/DISPLAY SHOWS
Clear calculator	[On/C][On/C]	0.
Enter rise	6 [Feet] 11 [Inch] 1 [/] 2 [Rise]	RISE 6 FEET 11-1/2 INCH
Enter run	14 [Feet] 6 [Inch] [Run]	RUN 14 FEET 6 INCH
Find common rafter length	[Diag]	DIAG 16 FEET 1 INCH
Find degree of pitch	[Pitch]	PITCH 25.64°
Find pitch in inches	[Pitch]	PITCH 5-3/4 INCH



Finding stair riser height and number of risers for custom stairs.

You're building an access stairway for a client who can't handle conventional-height stairs. If the total rise is 3 feet 9 inches and your desired riser height is approximately 5-1/2 inches, find the actual riser height, number of risers and underage or overage remaining...

STEP	KEYSTROKE	TAPE/DISPLAY SHOWS
Clear calculator	[On/C][On/C]	0.
Enter rise	3 [Feet] 9 [Inch] [Rise]	RISE 3 FEET 9 INCH
Enter riser height	5 [Inch] 1 [/] 2 [Stor] [Stair]	R-HT 5-1/2 INCH
Find actual riser height	[Stair]	R-SZ 5-5/8 INCH
Find number of risers	[Stair]	RSRS 8.
Find underage/overage	[Stair]	R+/- 0 INCH
Return to default	7 [Inch] 1 [/] 2 [Stor] [Stair]	R-HT 7-1/2 INCH

Product Specifications for Construction Master Pro DT Printer:

Size:

7.6" x 9.8" x 2.2" (193 mm x 248 mm x 56 mm)

Weight:

1.08 lb. / 10.8 oz. (488.0 gm.)

Does not include User's Guide

Power:

6V AC Adapter or 4 "AA" Batteries

Display:

11 Digits (7 Normal, 4 Fractions) with Full Annunciators

LCD Dimensions:

0.9" x 4" (22 mm x 101 mm)

Accuracy:

10 Digit Internal Accuracy

Included with Every

Construction Master Pro DT Printer:

Easy-to-follow User's Guide, AC power supply.

One Year Warranty:

All Calculated Industries calculators and electronic tools are covered by a Full One-Year Limited Warranty against defects in materials and workmanship. The full text of each warranty is published in the documentation accompanying each product and at www.calculated.com. Calculated Industries reserves the right to make changes in the materials and specifications of products without notice.

AUTHORIZED DEALER: